



ASSOCIAÇÃO DE FABRICANTES PARA A INDÚSTRIA AUTOMÓVEL
PORTUGUESE MANUFACTURERS ASSOCIATION FOR THE AUTOMOTIVE INDUSTRY

PORTUGAL
AUTO COMPONENTS
INDUSTRY

Key Data (2018)



COMPANIES

235

<1%

Manufacturing industry companies



EMPLOYMENT

55.000

8%

Manufacturing industry employment



TURNOVER

11,3 Bil EUR

5%

GDP – Gross Domestic Product



EXPORTS

9,4 Bil EUR

16%

Exports of tradeable goods

Source: AFIA

Location of Manufacturing Sites (nº, 2018)

VIANA DO CASTELO 27
BRAGA 36

4 BRAGANÇA

AFIA's office

PORTO 48

1 VILA REAL

AVEIRO 60

10 VISEU

4 GUARDA

MANUFACTURING SITES 265

COIMBRA 7

1 CASTELO BRANCO

Some enterprises have more than one manufacturing site

LEIRIA 15

2 PORTALEGRE

SANTARÉM 13

LISBOA 8

9 ÉVORA

SETÚBAL 20

MANUFACTURING SITES

>40

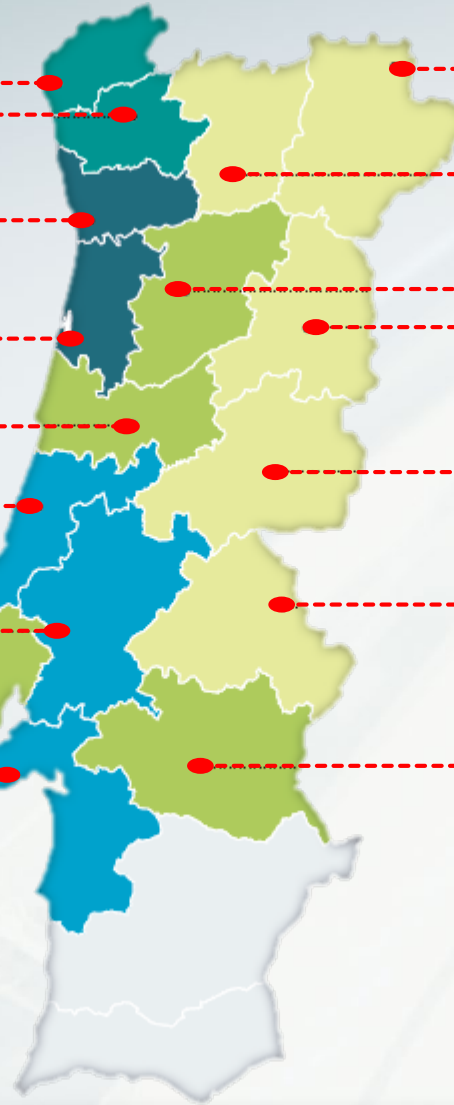
21 - 40

11 - 20

6 - 10

1 - 5

0

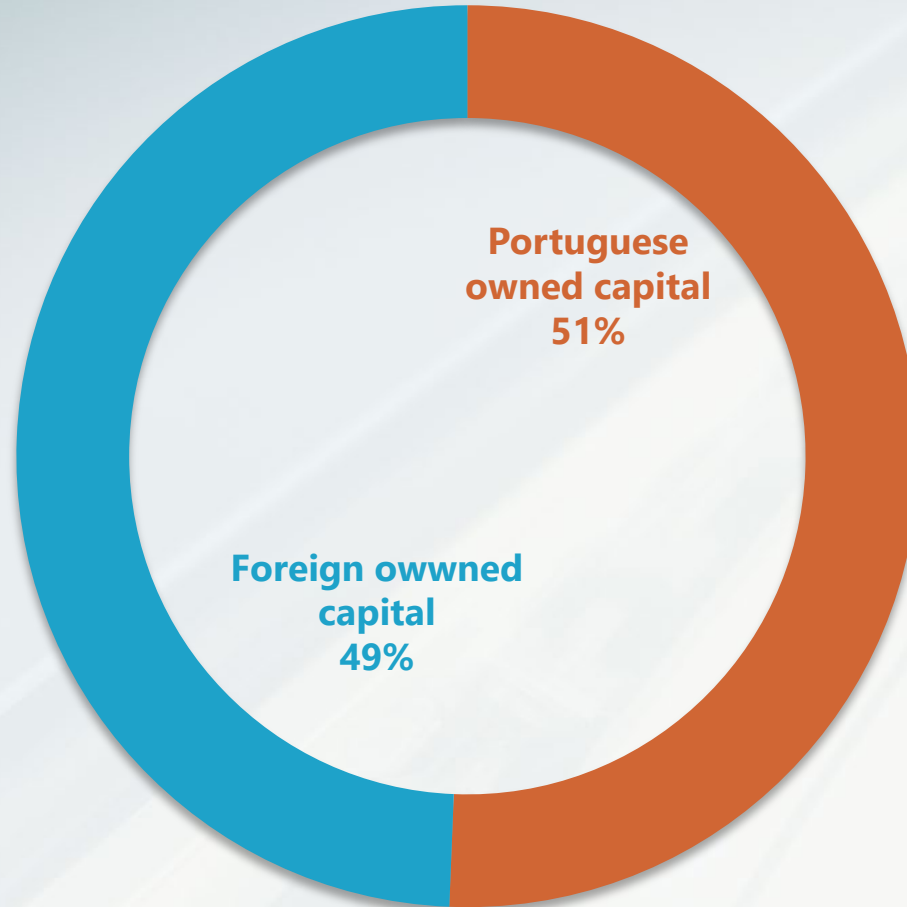


Source: AFIA

Distribution of Company Shareholder, 2018 (% of companies)

Number of companies 235

% of companies



Source: AFIA

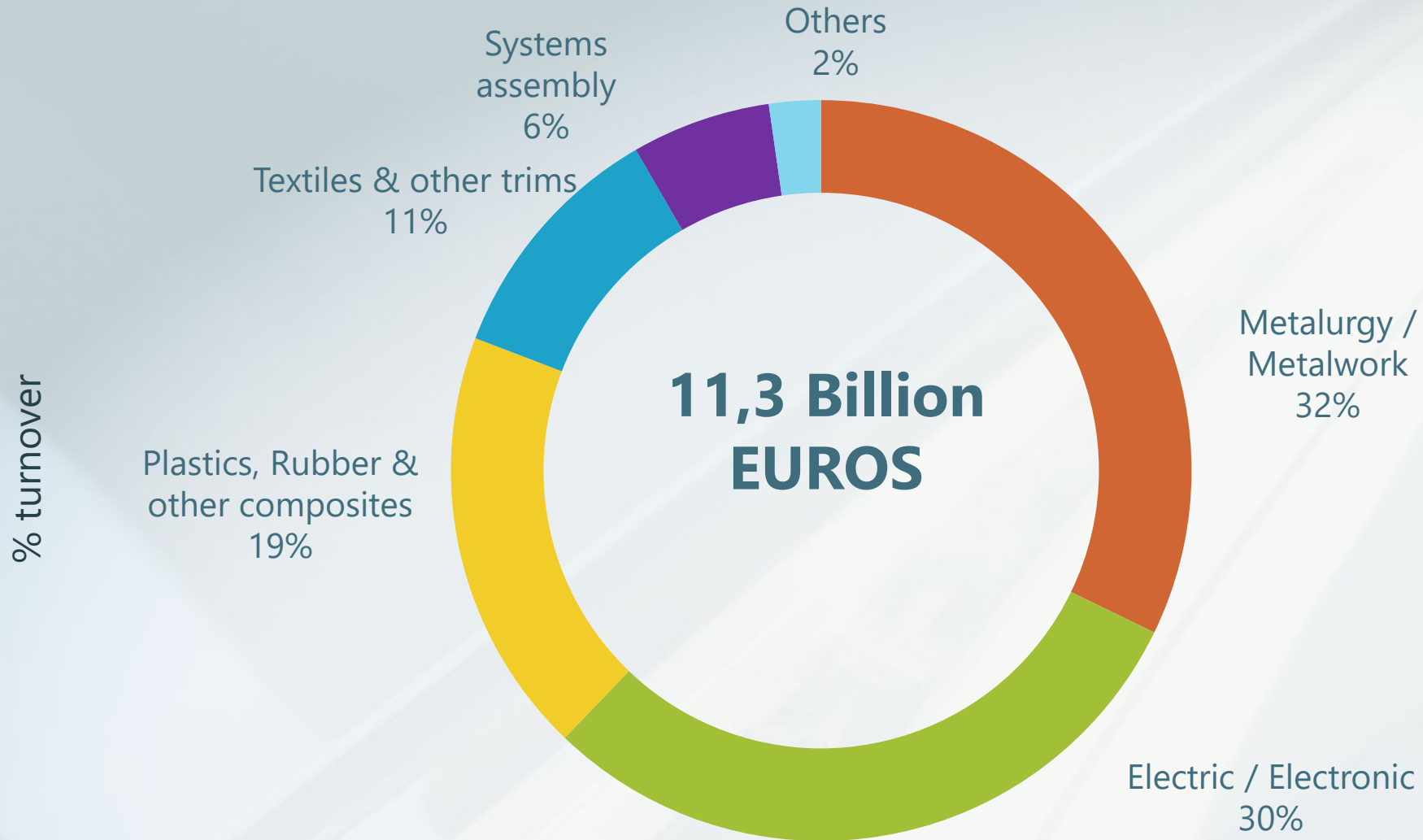
Direct Employment (annual average, x 1.000)

n° Employees (annual average, x 1.000)



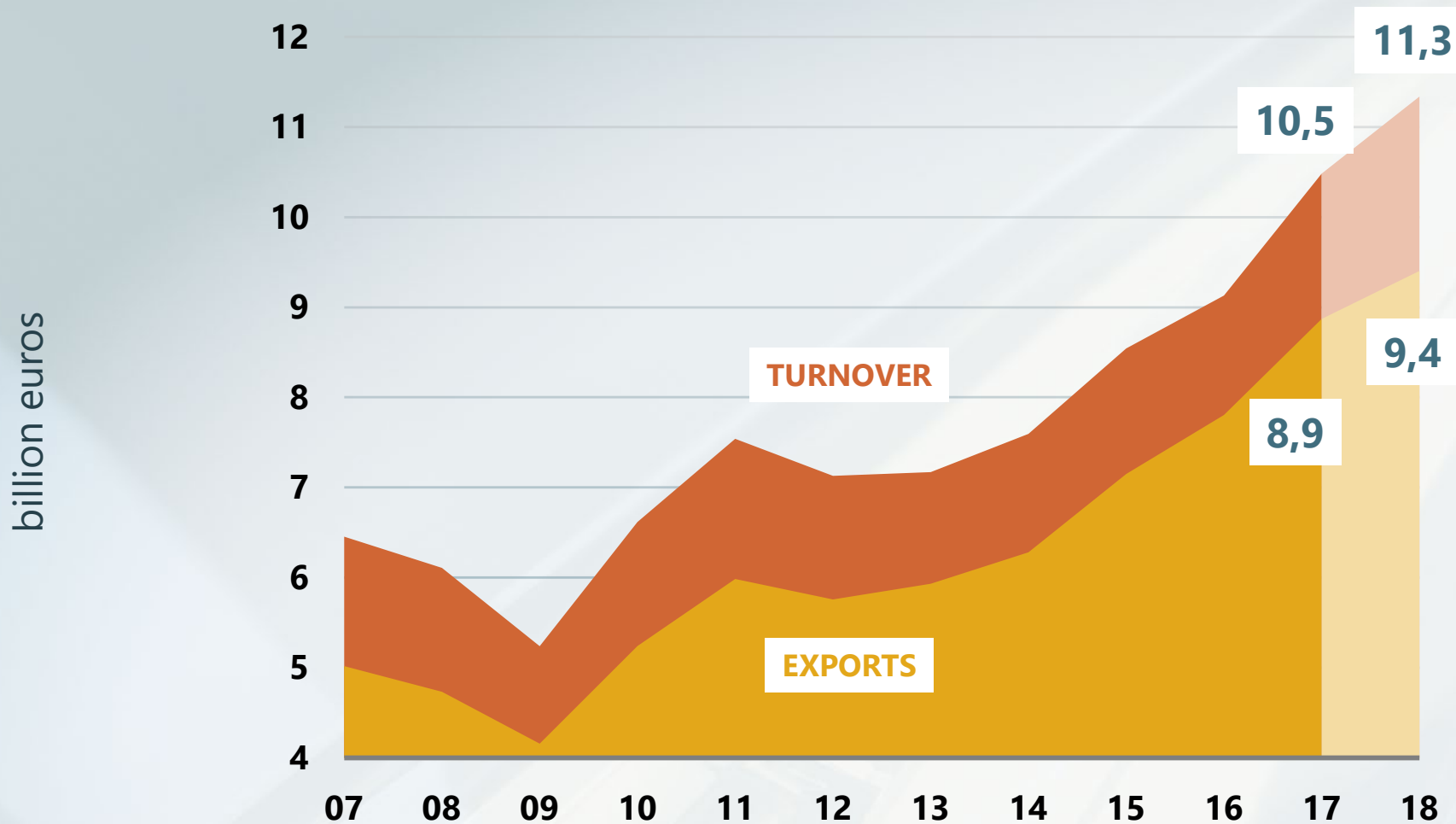
Source: AFIA

Turnover by Activity 2018 (% turnover)



Source: AFIA

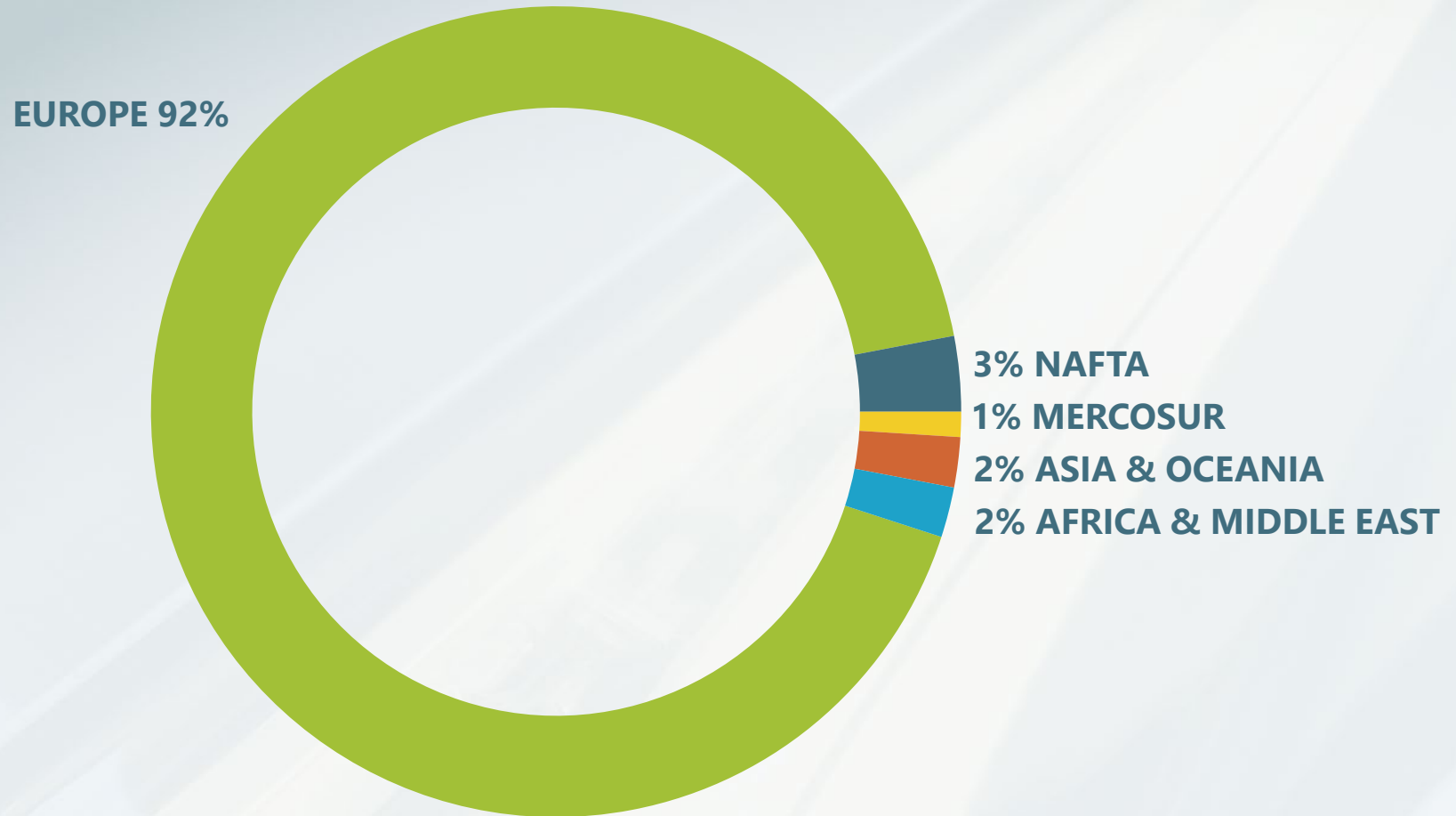
Turnover & Exports (billion euros)



Source: AFIA

Sales Destinations by Region (% , 2018)

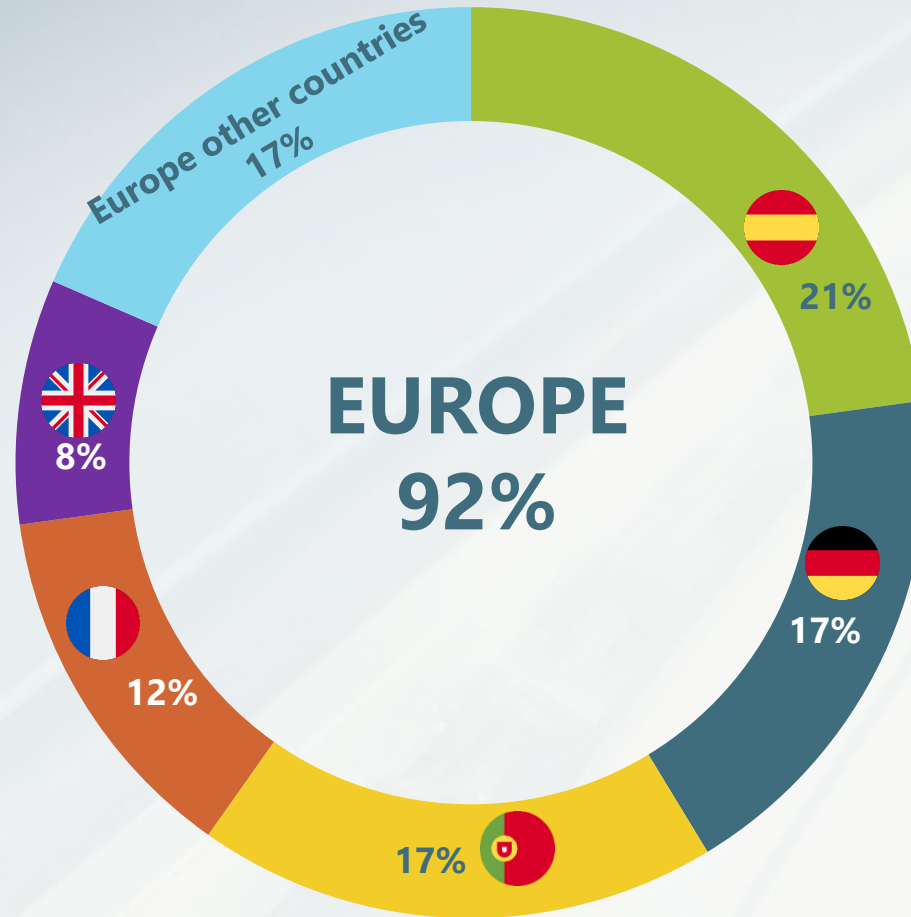
% turnover



Source: AFIA

Sales Destinations by Country (% , 2018)

% turnover



Source: AFIA



AFIA – Associação de Fabricantes para a Indústria Automóvel
Portuguese Manufacturers Association for the Automotive Industry

Edifício de Serviços da AEP · Av.^a Dr. António Macedo, 196
4450-617 LEÇA DA PALMEIRA
PORTUGAL

T +351 226 172 668
info@afia.pt
www.afia.pt